

# *Synthetic pallets*



***For every application,  
the most convenient pallet***



# **PLASTIPALLET**

**[WWW.PLASTIPALLET.EU](http://WWW.PLASTIPALLET.EU)**

**Specifications:**

- Pallets made of durable recycled synthetic
- Long life span thanks to bumpers - Lightweight, but very stable
- Temperature in use: -20° to +60°C / Cleaning: up to + 100°C max.
- Nestable (compact stacking)



standing bumper

**REC  
PP**



black

Reference: L 1208  
 Dimensions: 1200x800x134 mm  
 Finishing: 9 feet  
 Deck: closed  
 Window opening: 95 mm  
 Load capacity: 1200 kg static  
 600 kg dynamic  
 not in rack!

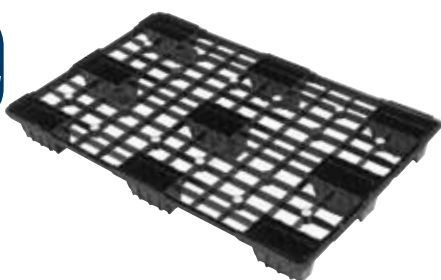
**REC  
PE**



black

Reference: L 1208-XP  
 Dimensions: 1200x800x150 mm  
 Finishing: 9 feet  
 Deck: open  
 Window opening: 110 mm  
 Load capacity: 1500 kg static  
 800 kg dynamic  
 not in rack!

**REC  
HDPE**



black

Reference: L 1208-XPL  
 Dimensions: 1200x800x120 mm  
 Finishing: 9 feet  
 Deck: open  
 Window opening: 90 mm  
 Load capacity: 700 kg static  
 350 kg dynamic  
 not in rack!

**LEIGHT-  
WEIGHT**

**REC  
PPC**



black

Reference: L 1208-XPR  
 Dimensions: 1200x800x140 mm  
 Finishing: 3 skids  
 Deck: half-open  
 Window opening: 100 mm  
 Load capacity: 1200 kg static  
 800 kg dynamic  
 400 kg in rack

**RACKABLE**

**REC  
PP**



black

Reference: L 1210  
 Dimensions: 1200x1000x134 mm  
 Finishing: 9 feet  
 Deck: closed  
 Window opening: 100 mm  
 Load capacity: 1500 kg static  
 800 kg dynamic  
 not in rack!

**REC  
PE**



black

Reference: L 1210-XP  
 Dimensions: 1200x1000x150 mm  
 Finishing: 9 feet  
 Deck: open  
 Window opening: 110 mm  
 Load capacity: 2000 kg static  
 1000 kg dynamic  
 not in rack!

## Specifications:

- Pallets made of High Density Polyethylene
- Universal use in distribution, closed loops or export
- Temperature in use: -20° to +50°C / Cleaning: up to +100°C max.
- Weather and UV resistant

**HDPE**



clear grey

Reference: H 1208 UPP2  
 Dimensions: 1200x800x150 mm  
 Finishing: 2 skids  
 Deck: open  
 Window opening: 100 mm  
 Load capacity: 4500 kg static  
 1500 kg dynamic  
 750 kg in rack

**HDPE**



grey

Reference: H 1208 UPPC2  
 Dimensions: 1200x800x150 mm  
 Finishing: 2 skids  
 Deck: closed  
 Window opening: 100 mm  
 Load capacity: 4500 kg static  
 1500 kg dynamic  
 750 kg in rack

**HDPE**



clear grey

Reference: H 1208 UPP3  
 Dimensions: 1200x800x150 mm  
 Finishing: 3 skids  
 Deck: open  
 Window opening: 100 mm  
 Load capacity: 4500 kg static  
 1500 kg dynamic  
 750 kg in rack

**HDPE**



grey

Reference: H 1208 UPPC3  
 Dimensions: 1200x800x150 mm  
 Finishing: 3 skids  
 Deck: closed  
 Window opening: 100 mm  
 Load capacity: 4500 kg static  
 1500 kg dynamic  
 750 kg in rack

**HDPE**



clear grey

Reference: H 1210 UPP3  
 Dimensions: 1200x1000x155 mm  
 Finishing: 3 skids  
 Deck: open  
 Window opening: 95 mm  
 Load capacity: 4500 kg static  
 1500 kg dynamic  
 750 kg in rack

**HDPE**



clear grey

Reference: H 1210 UPP5  
 Dimensions: 1200x1000x155 mm  
 Finishing: 5 skids  
 Deck: open  
 Window opening: 95 mm  
 Load capacity: 4500 kg static  
 1500 kg dynamic  
 750 kg in rack

**Specifications:**

- Shock resistant matter + gas-assist technology for extra solidity
- Intensive use in heavy rotational environments, semi-hygienic applications
- Perimetrical impact zones

**PPC**



clear grey

Reference: PP 1208 OD  
 Dimensions: 1200x800x155 mm  
 Finishing: 3 skids  
 Deck: open  
 Window opening: 95 mm  
 Load capacity: 4000 kg static  
 1000 kg dynamic  
 1000 kg in rack

**PPC**



clear grey

Reference: PP 1208 CD  
 Dimensions: 1200x800x155 mm  
 Finishing: 3 skids  
 Deck: closed  
 Window opening: 95 mm  
 Load capacity: 4000 kg static  
 1000 kg dynamic  
 1000 kg in rack

**PPC**



clear grey

Reference: PP 1210 OD3  
 Dimensions: 1200x1000x160 mm  
 Finishing: 3 skids  
 Deck: open  
 Window opening: 95 mm  
 Load capacity: 5000 kg static  
 1250 kg dynamic  
 1250 kg in rack

**PPC**



clear grey

Reference: PP 1210 CD3  
 Dimensions: 1200x1000x160 mm  
 Finishing: 3 skids  
 Deck: closed  
 Window opening: 95 mm  
 Load capacity: 5000 kg static  
 1250 kg dynamic  
 1250 kg in rack

**Contact us for other models and/or dimensions. Also special executions.**



**Specifications:**

- Temperature in use: -20° to +50°C / Cleaning: up to +100°C max.
- Weather and UV resistant
- Options: marking, antiskid, recycled plastics (dark grey), no retaining rim, (clear grey), ...

**PPC**



clear grey

Reference: PP 1210 OD5  
 Dimensions: 1200x1000x160 mm  
 Finishing: 5 skids  
 Deck: open  
 Window opening: 95 mm  
 Load capacity: 5000 kg static  
 1250 kg dynamic  
 1250 kg in rack

**PPC**



clear grey

Reference: PP 1210 CD5  
 Dimensions: 1200x1000x155 mm  
 Finishing: 5 skids  
 Deck: closed  
 Window opening: 95 mm  
 Load capacity: 5000 kg static  
 1250 kg dynamic  
 1250 kg in rack

**PPC**



clear grey

Reference: PP 1210 OD6  
 Dimensions: 1200x1000x160 mm  
 Finishing: 6 skids  
 Deck: open  
 Window opening: 95 mm  
 Load capacity: 5000 kg static  
 1250 kg dynamic  
 1250 kg in rack

**PPC**



clear grey

Reference: PP 1210 CD6  
 Dimensions: 1200x1000x160 mm  
 Finishing: 6 skids  
 Deck: closed  
 Window opening: 95 mm  
 Load capacity: 5000 kg static  
 1250 kg dynamic  
 1250 kg in rack

**Specifications:**

- Food safe materials - extremely durable and performant
- Temperature in use: varying, consult us for more information
- Weather and UV resistant
- Applications: food industry, chemical and pharmaceutical industries, labs & hospitals, ...

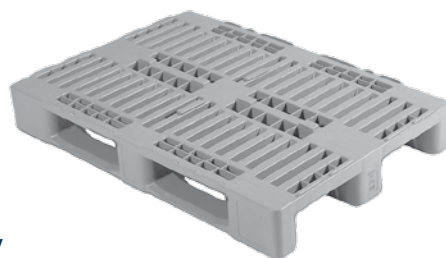
**HDPE**



clear grey

Reference: H2 EURO  
 Dimensions: 800x600x160 mm  
 Finishing: 2 skids  
 Deck: open  
 Window opening: 102 mm  
 Load capacity: 2000 kg static  
 500 kg dynamic  
 not in rack!

**HDPE**



clear grey

Reference: H1 EURO  
 Dimensions: 1200x800x160 mm  
 Finishing: 3 skids  
 Deck: open  
 Window opening: 102 mm  
 Load capacity: 5000 kg static  
 1250 kg dynamic  
 1000 kg in rack

**HDPE**



clear grey

Reference: P80  
 Dimensions: 1200x800x155 mm  
 Finishing: 3 skids  
 Deck: closed  
 Window opening: 95 mm  
 Load capacity: 4800 kg static  
 1200 kg dynamic  
 1000 kg in rack

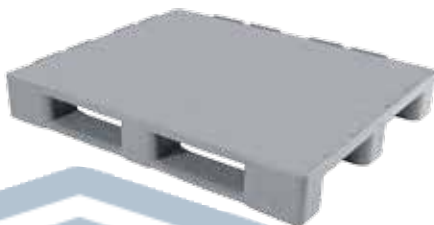
**HDPE**



clear grey

Reference: H3 EURO  
 Dimensions: 1200x1000x160 mm  
 Finishing: 3 skids  
 Deck: open  
 Window opening: 102 mm  
 Load capacity: 5000 kg static  
 1250 kg dynamic  
 850 kg in rack

**HDPE**



clear grey

Reference: P100  
 Dimensions: 1200x1000x160 mm  
 Finishing: 3 skids  
 Deck: closed  
 Window opening: 95 mm  
 Load capacity: 5000 kg static  
 1250 kg dynamic  
 1250 kg in rack

**HDPE**



clear grey

Reference: P100-5  
 Dimensions: 1200x1000x160 mm  
 Finishing: 5 skids  
 Deck: closed  
 Window opening: 95 mm  
 Load capacity: 5000 kg static  
 1250 kg dynamic  
 1250 kg in rack

## Specifications:

- Pallets made of recycled High Density Polyethylene
- Universal use in distribution, closed loops or export
- Temperature in use: varying, consult us for more information
- Weather and UV resistant

**REC  
HDPE**



dark grey

Reference: P80PB  
Dimensions: 1200x800x160 mm  
Finishing: 3 skids  
Deck: closed  
Window opening: 95 mm  
Load capacity: 4800 kg static  
1200 kg dynamic  
1000 kg in rack

**REC  
HDPE**



dark grey

Reference: H 1208UPP3 R  
Dimensions: 1200x800x150 mm  
Finishing: 3 skids  
Deck: open  
Window opening: 100 mm  
Load capacity: 4500 kg static  
1500 kg dynamic  
750 kg in rack

**REC  
HDPE**



dark grey

Reference: P100PB  
Dimensions: 1200x1000x160 mm  
Finishing: 3 skids  
Deck: closed  
Window opening: 95 mm  
Load capacity: 5000 kg static  
1250 kg dynamic  
1250 kg in rack

**REC  
HDPE**



dark grey

Reference: H 1210UPP3 R  
Dimensions: 1200x1000x155 mm  
Finishing: 3 skids  
Deck: open  
Window opening: 95 mm  
Load capacity: 4500 kg static  
1500 kg dynamic  
750 kg in rack

# Plastibac offers you multiple other solutions for:

## Storage & warehouse



## Logistics



## Catering



## Environmental



[www.plastibac.eu](http://www.plastibac.eu)

### KEY

**PPC** Polypropylene - Copolymer

**REC PP** Recycled Polypropylene

**REC HDPE** Recycled High Density Polyethylene

**HDPE** High Density Polyethylene

**REC PE** Recycled Polyethylene

**REC PPC** Recycled polypropylene - Copolymer

All the indicated charges are indicative and based on an equal charge on the pallet with standard and stable staple goods



**PLASTIBAC**  
plastics solutions for you



Plasti-Bac bvba  
Z.5 Mollem 260 - 1730 Asse - Belgium  
T: +32 (0)2 452 95 61 - F: +32 (0)2 452 28 28  
M: info@plastibac.eu - W: www.plastibac.eu

**WWW.PLASTIPALLET.EU**